


Child support changes in October / November 2021



This summary accompanies our webinars: *Child support changes*

ird.govt.nz/bt-webinars

Legislation changes



The Child Support Amendment Act was enacted in March 2021 and includes changes that are due to come into effect in October and November 2021.

New legislation comes into effect including:

Further changes to the penalties

Compulsory employer child support deductions from salary/wages - for newly liable and returning customers

A four-year time bar on child support reassessments and applying for administrative reviews

Offsetting amounts owed (when two parents owe each other)

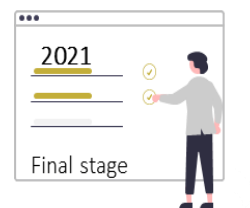
New grounds for exemptions

Changes to key age-related definitions

New timeframes for applying for, and providing, paternity orders


28 days after their first assessment for customers to advise of existing circumstances

We're making changes that child support customers may notice:



- Upgrading myIR
- Moving child support into our new system
- Implementing legislative changes

Moving child support into our new system



Child support is the final product that we are moving into our new system.

Child support customers will be able to do more in their myIR account, including:

- registering for child support and
- managing administrative review applications and objections

Upgrading to the latest version of myIR

A version upgrade not a system change

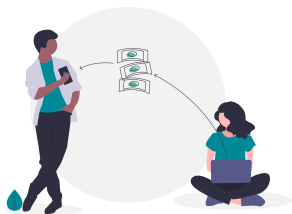
All customers who use myIR will notice changes

myIR will have a new layout which will make it easier for customers to see the most important information across all of their accounts, including their child support account.



Child support changes in October / November 2021

Payments processed faster



We'll be able to pay child support payments to receiving carers by the 23rd of the same month, as long as the liable parent has paid on time.

New payment options for manual payers



We will be able to offer new payment methods to liable parents who are making payments manually.

- Direct debit via myIR
- Reoccurring direct debit – can select that we deduct their ongoing liability automatically each month or up to a specified amount each month.
- Manual payer schedule – allows liable parents to select a pay frequency and we will calculate how much they need to pay

THANK YOU!

Transitioning out of transformation

At the end of our transformation, IR will have:

the latest version of a system that is agile and responsive to New Zealand's needs

an organisation that works together better to improve outcomes for customers

our knowledge, practices and processes developed throughout the programme



More information

This is a summary of the upcoming changes. For more information:

Visit our website

[What's changing in 2021](#)

ird.govt.nz/business-transformation-2021

Watch our webinars

[Business Transformation webinars](#)

www.ird.govt.nz/bt-webinars

